

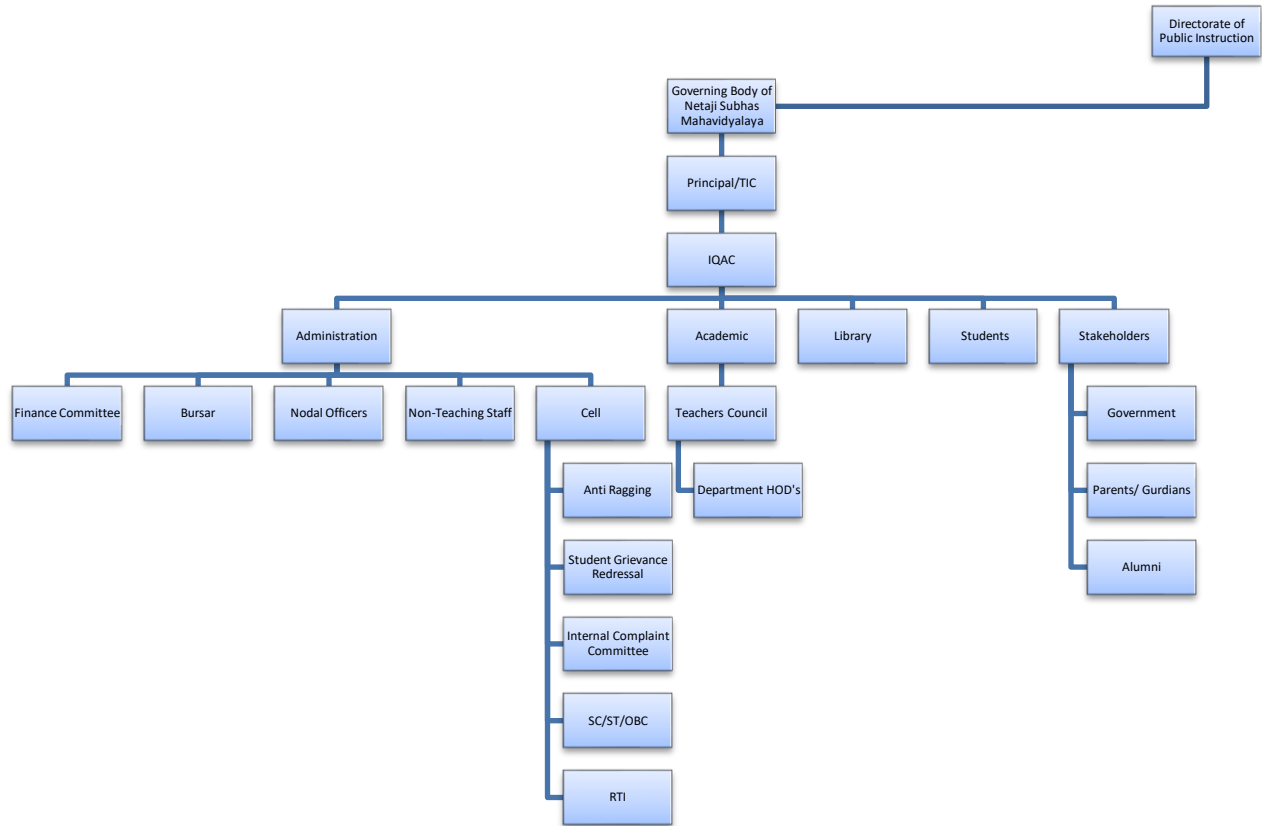


NETAJI SUBHAS MAHAVIDYALAYA

NAAC ACCREDITED B+

Affiliated to Cooch Behar Panchanan Barma University
and included into section 2(f) & 12B under UGC Act. 1956.

P.O. : HALDIBARI
DIST. : COOCH BEHAR (W.B.)
PIN : 735122
Phone : (03561) 263266
Fax : (03561) 263421
E-mail : nsmahavidyalaya@rediffmail.com
Website : www.nsmahavidyalaya.org.in



Teacher-in-Charge
Netaji Subhas Mahavidyalaya
Haldibari, Cooch Behar.



**NETAJI
SUBHAS
MAHAVIDYALAYA**

NAAC ACCREDITED B+

Affiliated to Cooch Behar Panchanan Barma University
and included into section 2(f) & 12B under UGC Act. 1956.

P.O. : HALDIBARI
DIST. : COOCH BEHAR (W.B.)
PIN : 735122
Phone : (03561) 263266
Fax : (03561) 263421
E-mail : nsmahavidyalaya@rediffmail.com
Website : www.nsmahavidyalaya.org.in

Strategic planning and deployment document (SPDD)

Summary

A strategic planning is crucial for attaining the goals of academic excellence and overall growth and development of an individual student as aspired by the institution. It is a continuous process that determines the overall growth of an individual student as the effectiveness of the curriculum solely depends on the manner of formulation and implementation of the strategic planning. The strategic planning and deployment document of our College is in alliance with the Vision and Mission of the Institution.

Netaji Subhas Mahavidyalaya as an educational institution has formulated its strategic planning and deployment document in accord with all the stakeholders including Head of the Institution, faculty, non-teaching staff, external members of the Governing body and parents. To determine the effectiveness of strategic planning and deployment document, the Institution takes into consideration various factors such as past achievements, challenges at present and strength and drawbacks that needs to be revised and reviewed.

Vision of the college

Netaji Subhas Mahavidyalaya as an educational institution has consistently endeavored to foster quality education and holistic development of young minds. Ever since the foundation stones of the institution was laid, it has been a relentless endeavor of the institution to serve the twin purpose of enlightenment and empowerment to young minds, which will ultimately lead to the betterment of society. 'From darkness to light' and 'service to the society from campus to community' is the motto we as an educational institution deeply uphold. To foster gender equity and promote positive discrimination for a just, empathetic and scientific temperament with reverence for indigenous values and learning approach of our students. To shape young minds into responsible and compassionate individuals who will

Teacher-in-Charge
Netaji Subhas Mahavidyalaya
Haldibari, Cooch Behar.



**NETAJI
SUBHAS
MAHAVIDYALAYA**

NAAC ACCREDITED B+

Affiliated to Cooch Behar Panchanan Barma University
and included into section 2(f) & 12B under UGC Act. 1956.

P.O. : HALDIBARI
DIST. : COOCH BEHAR (W.B.)
PIN : 735122
Phone : (03561) 263266
Fax : (03561) 263421
E-mail : nsmahavidyalaya@rediffmail.com
Website : www.nsmahavidyalaya.org.in

consistently contribute towards the betterment of society with the skill sets they have a quiet from the college is the main vision of Netaji Subhas Maahavidyalaya.

Mission of the college

1. To shape young individuals into ‘self reliant responsible and empathetic human beings’ who will contribute towards a bright and just society.
2. To empower the students from marginalized communities by providing relentless support in their pursuit for academic excellence.
3. To ensure a safe and healthy eco system for the female students so that they can readily persevere for their dreams and aspirations.
4. To impart education that encourages free thinking, scientific reasoning and cherishes human values based on compassion, equality and justice.
5. To successfully implement the NEP curriculum by introducing various skill based programmes and add on courses along with inclusion of outcome based programmes, focusing on entrepreneurship in collaboration with various startup companies. Launching of career counseling courses mostly targeted towards female students. that will fully benefit the students as envisioned in the National Education Policy 2020.

Goal- To impart quality education to the students which serves the twin purpose of enlightening them with wisdom and knowledge and train them into skilled individuals who turn into assets for the society in near future.

Strategic goals – Institutional strategic goals are effectively deployed in order to bring quality improvements in the following area-

- a) Teaching Learning
- b) Internal Quality Assurance System
- c) Infrastructural facilities

Teacher-in-Charge
Netaji Subhas Mahavidyalaya
Haldibari, Cooch Behar.



**NETAJI
SUBHAS
MAHAVIDYALAYA**

NAAC ACCREDITED B+

Affiliated to Cooch Behar Panchanan Barma University
and included into section 2(f) & 12B under UGC Act. 1956.

P.O. : HALDIBARI
DIST. : COOCH BEHAR (W.B.)
PIN : 735122
Phone : (03561) 263266
Fax : (03561) 263421
E-mail : nsmahavidyalaya@rediffmail.com
Website : www.nsmahavidyalaya.org.in

- d) Governance, Leadership and participative management
- e) Student's development and participation
- f) Staff development & welfare
- g) Collaboration and Extension Activities
- h) Best Practices

a) Teaching Learning-

- To develop and nurture environment for entrepreneurship training by establishing incubation centre.
- Well planned and prepared Academic Calendar by the Academic Committee.
- Formulation of an effective lesson plan by all the Departments of the Institution.
- Adoption of enhanced ICT techniques and use of advanced teaching aids.
- Development of e- learning resources
- Promote research culture and facilities.
- Introduction of innovative Add-on/Certificate/ Value added Courses.
- Further strengthen the transparent and fair feedback system.
- To introduce Language Lab.
- Focus on Continuous assessment of students.
- Mo Us with different institutions and industries.

b) Internal Quality Assurance System

- ✓ To organize Training programs/ workshops on quality up gradation for teaching and non-teaching staffs.
- ✓ Regular guidance in all spheres of Institutional mechanism for quality improvement.
- ✓ Promotion of best practices in the Institution.

Teacher-in-Charge
Netaji Subhas Mahavidyalaya
Haldibari, Cooch Behar.



**NETAJI
SUBHAS
MAHAVIDYALAYA**

NAAC ACCREDITED B+

Affiliated to Cooch Behar Panchanan Barma University
and included into section 2(f) & 12B under UGC Act. 1956.

P.O. : HALDIBARI
DIST. : COOCH BEHAR (W.B.)
PIN : 735122
Phone : (03561) 263266
Fax : (03561) 263421
E-mail : nsmahavidyalaya@rediffmail.com
Website : www.nsmahavidyalaya.org.in

- ✓ AQAR and SSR preparation and submission.
- ✓ Creating a suitable environment in the institution for the implementation of NEP 2020.
- ✓ Create awareness and mechanism for effective functioning of the Electoral literacy.

c) Infrastructural facilities :

- Increase the number of Smart Classrooms.
- To develop section for digital library.
- To adopt facilities like blind-friendly pavement, Braille etc. for the physically challenged students.
- To install solar panel for continuous power facilities.

d) Governance, Leadership and participative management

- More effective decentralization of the academic, administration and student related responsibilities.
- To assign duties, responsibilities and accountability from all stakeholders of the Institution.
- Increase participative management by establishment of more functional committees, Cells and clubs.

e) Student's Development, Participation and Support

- Focus on Students Trainings & Placement Activities
- Increase Student's representation in various committee and cell.
- Encourage and motivate students to participate in competitions.
- Encourage students to Participate in Institutional Social outreach activities such as National Social Service (NSS).
- Scholarships for needy and meritorious students

6. Staff Development & Welfare

Teacher-in-Charge
Netaji Subhas Mahavidyalaya
Haldibari, Cooch Behar.



**NETAJI
SUBHAS
MAHAVIDYALAYA**

NAAC ACCREDITED B+

Affiliated to Cooch Behar Panchanan Barma University
and included into section 2(f) & 12B under UGC Act. 1956.

P.O. : HALDIBARI
DIST. : COOCH BEHAR (W.B.)
PIN : 735122
Phone : (03561) 263266
Fax : (03561) 263421
E-mail : nsmahavidyalaya@rediffmail.com
Website : www.nsmahavidyalaya.org.in

- Performance evaluation system
- Staff Training for quality improvement.
- Staff welfare policy implementation
- Timely promotion of teachers through Career advancement schemes
- Funds to be allocated for seminars/conferences/workshops etc.

7. Collaboration and Extension Activities

- Mo Us with NGOs for student training and extension activities
- Identify community and social development work conducting awareness camps.
- Development of training centers for Indigenous skills for employability

8. Best Practices

- Green initiatives for Campus sustainability.
- Value-based women empowerment activities
- Effective planning for betterment of games and sports facilities in the Institution.
- ICT in teaching learning process, library and administrative jobs.

Teacher-in-Charge
Netaji Subhas Mahavidyalaya
Haldibari, Cooch Behar.